

CONTENTS

LANGUAGE & LITERATURE

Feel at Home with Homographs	1
Towards Colourful Language	2
Anagrams are Fun	3
It's People, People All the Way...	4
Values are Invaluable	5
What's the Good Word?	6
Know Your Gs	7
Body Language	8
Prefix and Suffix	9
Into the World of Comics	10
Fact File	11
Test Your Wisdom	12

ENVIRONMENT AROUND

Nature's Blessing	14
Space Capsule	15
A Doctor's Dictionary	17
Human Body	18
Chemistry of Life	20
Mobile Mania	22
Gaseous World	24
Amazing Plants	25
Amazing Animals	26
Smooth Working	27
Fact File	28
Test Your Wisdom	29

WORLD AROUND

National Flags	32
Continental Quiz	33
UNO	34
Water Ways	35
Tribes of the World	36
Currencies	37
News 'n' Views	38
National Emblems	39
Magnificent Masters of the World	40
Meal-Time Quiz	41
Fact File	42
Test Your Wisdom	43

ART & CULTURE

Myth Magic	45
Music Mania	46
Bonding with God	47
Sound of Music	48
Tongues	49
Bon Appetite!	50
From Om to Amen	51
The World of Art	52
Famous People of Indian Origin	53
Puppet Show	54
Fact File	55
Test Your Wisdom	56

MATH MAGIC

In Sync with Symmetry	58
Let Us Count	59
Symbols and Numbers	60
Figure It Out!	61
Figure It Out too!	63
Into the World of Numbers...	64
Fun with Numbers	65
Scratch Your Head	67
Brain Boosters	68
Walk on a Circular Path...	69
Fact File	70
Test Your Wisdom	71

SPORTS & GAMES

Riding a High Horse	73
Fun with Water	74
More Fun with Water	76
A Matter of Skill & Strength—Gymnastics	77
The Art of Self Defence	78
What's Your Racket?	79
Have a Ball!	80
Howzzatt!!	81
Right on the Track!	83
The Magic of Soccer	85
Famous International Football Players	86
Fact File	87
Test Your Wisdom	88

Answers	91
---------	----

▶ Feel at Home with Homographs

Homographs are words which are flexible enough to be used in a variety of ways.

Find and write homographs which exhibit different meanings as given below. The first one is done for you.



? DO YOU KNOW?
A person who studies the origin of words and their meanings is called an **Etymologist**.

1. • Very unkind
• Average M E A N

2. • The end point
• Small sum of money given to a waiter T

3. • A card game
• Road over a river B

4. • A false statement
• To place one's body in a flat position L

5. • A long piece of wood
• North and South ends of the Earth's axis P

6. • To keep out of sight
• Animal skin H

7. • Bird's beak
• To be paid in a hotel B

8. • A male deer
• A dollar may be called by this name B

Towards Colourful Language

Colours add depth to our expressions. Let us understand the true meanings of the following colourful expressions. Use the Help Box and write the correct meanings.

1. To see Red

2. In a fit of Blue

3. White-faced

4. To feel Green



5. A Grey day

6. In the Pink of health

7. In Black and White

8. Brownd off

Help Box		
Fit and Fine	Pale and Nervous	Depressed or Sorrowful
Discontented	Cloudy or Humid day	Envious or Jealous
To sense danger ahead	In print or written down	

Anagrams are Fun

Words which are formed by re-arranging the letters of the existing words are called **Anagrams**. For example, 'TRAP' — 'PART'

Fill in the given crossword by making Anagrams from the words given in the brackets. One is done for you.



Down ↓

1. More than bad (SWORE)
2. Sound made by a sheep (TABLE)
3. Movement of water (WOLF)
4. To jump (PALE)
5. A story (LATE)
6. Average (MANE)

Across →

7. A long dress (BORE)
8. A sickness (SEASIDE)
9. One-time (CONE)
10. A vessel (NAP)

		¹ W						
	⁷	O	² B					
		R				⁴ L		⁶
⁸ D		S						
		E					⁵	
				³ F		¹⁰		N
				⁹			E	

▶ It's People, People All the Way...

People in a group can be named differently. The Collective Nouns given here are related to particular groups. Choose and write the correct name with the descriptions provided.

Parliament	Orchestra	Staff	Panel	Audience
Mob	Queue	Crowd	Jury	Team



1. A group of musicians playing together form an _____
2. A group of people associated for playing a match _____
3. A group of people deciding a court case form a _____
4. A group of teachers is called _____
5. People standing at the bus-stop form a _____
6. A group of listeners at a lecture are _____
7. Selected doctors or professionals form a _____
8. People elected to make law, constitute the _____
9. People at the shopping complex are referred to as the _____
10. A group of violent people intending to attack form a _____

? DO YOU KNOW?
 A 'Congregation' means a gathering of people for religious worship especially at a church.

▶ Values are Invaluable

Read each of the following situations carefully. The values exhibited by the students in these situations are given in a jumbled form. Unjumble them to get the correct answer.

- The school Principal and teachers asked the students to take an active part in the 'Cleanliness Drive'. The students not only cleaned up their classrooms but also the school corridors, drinking water area, laboratories, etc.

T _ _ _

S _ _ _ _

(META ITPSRI)

- During 'Environment Week', the students of Class-VI planted new saplings and took care of the school garden and trees in the compound.

C _ _ _ _ G

F _ R

N _ _ _ _ E

(IACRNG OFR EUANTR)

- The students collected their pocket money and bought sweets, earthen lamps and gifts for the children at the nearby orphanage. They celebrated Diwali with them and made them happy.

S _ _ _ _ _ G

(IRHSANG)

- The school organised a 'Blood Donation Camp'. The students volunteered and helped with the arrangements. They also requested their parents and relatives to donate blood and save lives.

H _ _ _ _ _ Y

(YNUHMAIT)

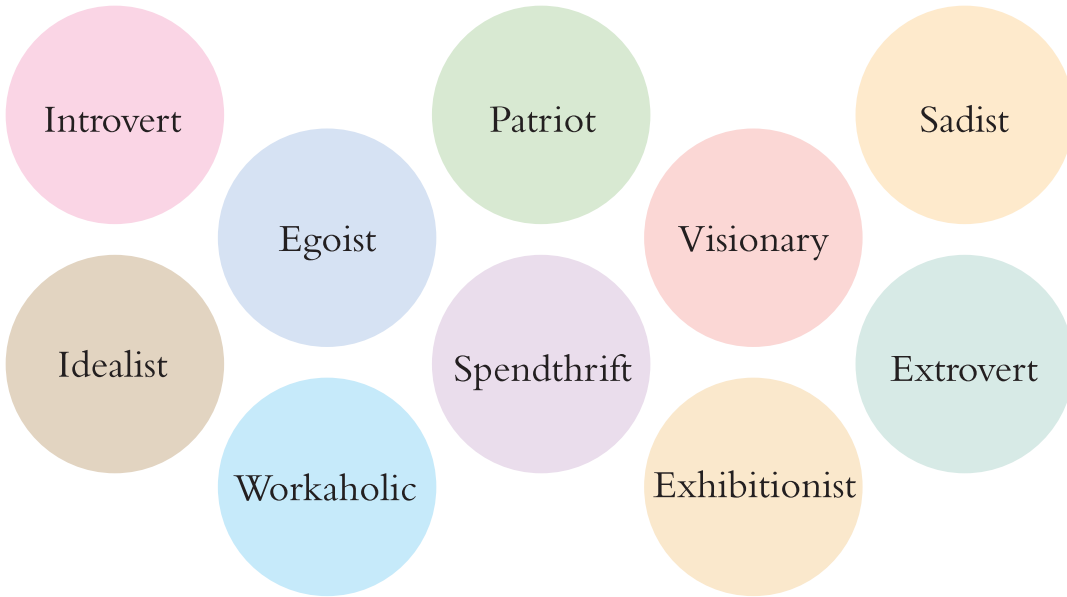
- On Teachers' Day, the students decorated their classrooms and welcomed their teachers. They wished them with cards and flowers.

R _ _ _ _ _ T

(TPERSEC)

▶ What's the Good Word?

Given below are the descriptions of some traits of personality. The words provided in the bubbles name them. Choose and write the correct name against the description given.



1. Moody, quiet and happy to be alone.
2. Prefers company of others and mixes easily with people.
3. Eager to show-off at every gathering.
4. A person who is a compulsive worker.
5. Believes in spending money freely (without thinking).
6. One who believes in great ideals.
7. A person who is selfish and preoccupied with his own interests.
8. One who gets pleasure by hurting others.
9. A person having vision or ideas.
10. A strong supporter of his or her country.

▶ Know Your Gs

G is a **GREAT** letter to describe people and their qualities. Numerous adjectives starting with **G** are used in our conversation as well as writing. Choose and write the words starting with **G**, next to their given meanings.

1. A cunning person G _____
2. Very bad-tempered G _____
3. Loud or Gaudy G _____
4. Very brave G _____
5. Greedy for food G _____
6. True or Original G _____
7. Very easily taken in or fooled G _____
8. Really social or outgoing G _____
9. Thankful or appreciative G _____
10. Serious or harsh G _____



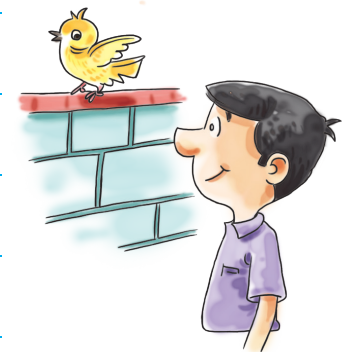
Grim
Gallant
Glutton
Gullible
Garish
Guile
Gregarious
Genuine
Grumpy
Grateful



▶ Body Language

Our body is a very effective medium of communication. Feelings, emotions and reactions are exhibited to create impressions. Some of them are listed below. Read them and write the correct expression against each from the Help Box given. The first one is done for you.

1. Very attractive Eye-catching
2. To watch carefully _____
3. Fully occupied by something _____
4. To be able to enjoy and appreciate music _____
5. To work with dedication _____
6. Something/Someone very much loved _____
7. To interfere into other's affairs _____
8. To tease or make fun of _____
9. To be in a state of shock _____
10. To be good at growing plants _____



Help Box		
To keep an eye on	Up to one's eyes	After one's heart
To have an ear for	To put heart and soul	To have green fingers
To poke one's nose	Eye-catching	Tongue-tied
To pull someone's leg		

Prefix and Suffix

- An addition to the beginning of a word is known as a **Prefix**.
- The end word which is attached to a root word is known as **Suffix**.

A. Choose and write appropriate Prefix before the given words.

1. → literate, logical, legal

2. → vide, oxide, vorce

3. → real, spoken, wanted

4. → port, fer, late

5. → tend, it, ample

6. → pone, vent, pare

Help Box					
Di	Trans	Il	Pre	Ex	Un

B. Choose and write suitable Suffix for the following words.

1. → Dic, Devo, Por

2. → Natur, Norm, Form

3. → Thought, Tact, Fright

4. → Sleepless, Restless, Careless

5. → Light, Smooth, Fast

6. → Power, Sense, Taste

Help Box					
tion	ful	al	ness	less	en

▶ Into the World of Comics

A. A comic strip is a series of pictures that narrate a story. The names of famous cartoon characters and their creators are given below. Match them.

CHARACTERS	CREATORS
1. Mickey and Donald ▶	◀ a. Herge
2. Tintin ▶	◀ b. Hank Ketcham
3. Dennis, the Menace ▶	◀ c. Walt Disney
4. Batman ▶	◀ d. Bob Kane
5. Tarzan ▶	◀ e. Edgar Burroughs
6. Spiderman ▶	◀ f. Stan Lee

B. The pictures of some popular comic characters from all over the world are given below. Identify them and write their names in the space provided.



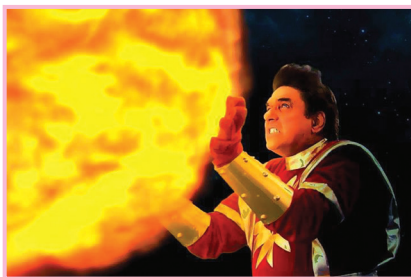
1. _____



2. _____



3. _____



4. _____



5. _____



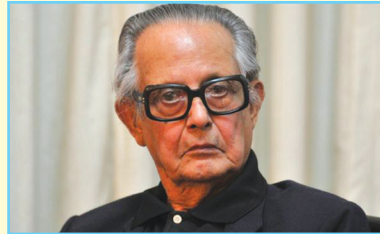
6. _____



1. Silly Sally swiftly shared seven silly sheep.
2. She sells sea shells on the sea shore.
3. Betty bought some butter but the butter was so bitter that Betty bought better butter to make bitter butter better butter.

Fact File

R.K. Laxman



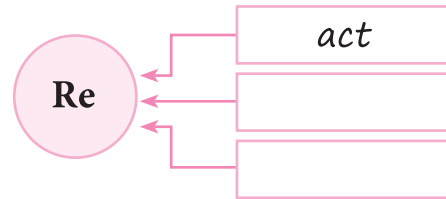
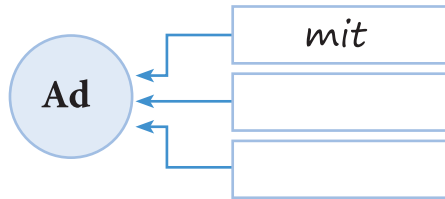
(24 October 1921 – 26 January 2015)

- ▶ Rasipuram Krishnaswami Iyer Laxman was an internationally renowned cartoonist and a famous illustrator.
- ▶ R.K. Laxman started drawing on the doors, walls and floor of his house, early in his childhood. In school, he used to draw the caricatures of his teachers.
- ▶ After completing his high school, he graduated with a Bachelor of Arts degree from the University of Mysore.
- ▶ He started his career as a 'Freelance artist'. His earliest works were for newspapers and magazines like *Swarajya* and *Blitz*.
- ▶ He illustrated the stories of his brother, R.K. Narayan. His illustrations appeared in the newspaper, *The Hindu*, which were very much appreciated.
- ▶ He worked for Gemini Studios, Madras and then as a full time political Cartoonist at *The Free Press Journal*, Mumbai. Later, he joined *The Times of India* and worked there for more than fifty years.
- ▶ His popular creations are – *The Common Man* and *You Said It*, the cartoon strip. He also sketched for the T.V. adaptation of *Malgudi Days*.
- ▶ He won many awards. Some of them are–
 - Padma Bhushan – 1973
 - Ramon Magsaysay Award – 1984
 - Padma Vibhushan – 2005
 - Lifetime Achievement Award by IBN CNN TV – 2008
- ▶ He breathed his last on 26 January 2015 at Pune.

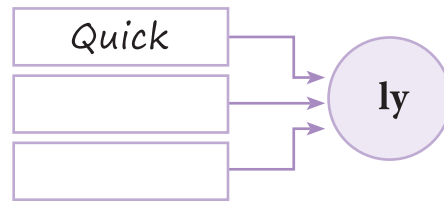
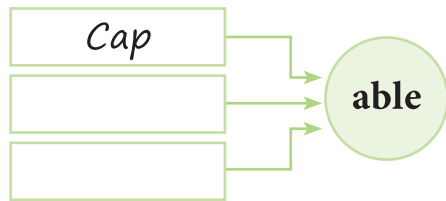


Test Your Wisdom

1. a. Make suitable words with the following prefixes.



b. Make suitable words with the following suffixes.



2. Write the meanings of the following expressions.

- a. In black and white _____
- b. To keep an eye on _____
- c. In pink of health _____
- d. Eye-catching _____
- e. After one's heart _____

3. Complete the following sentences.

- a. I am a spendthrift, I freely _____
- b. I am an idealist, I believe in _____
- c. I am an extrovert, I like _____
- d. I am an introvert, I am _____



4. State the following statements as True or False.

- a. Tip is the small sum of money given to a waiter.
- b. An audience is a group that gathers to listen to a lecture.
- c. Guile is the term used for a very brave person.
- d. Walt Disney was the creator of the cartoon character named Tintin.
- e. R.K. Laxman was the creator of the cartoon strip, *The Common Man*.

5. Circle the odd one out.

- a. index/contents/preface/surface/bibliography
- b. poet/dramatist/numismatist/writer/play-wright
- c. educator/tutor/school teacher/instructor/philatelist
- d. poem/lymeric/ballad/essay/rhyme



6. Figure out the following analogies.

- a. Happiness : Laughter :: Sorrow : _____
.....
- b. Socks : Feet :: Cravat : _____
.....
- c. Attack : Heart :: Sty : _____
.....
- d. Books : Library :: Experiments : _____
.....

Nature's Blessing

Given below is the tree having the pictures which deal with different branches of Science. Pick the name from the Help Box and write it below the correct picture.

1. G

2. A

3. E

4. H

5. B

6. A

7. C

8. G

9. M

10. Z

Branches of Science

Help Box			
Astronomy	Gerontology	Entomology	Biology
Cardiology	Anthropology	Zoology	Geology
Hydrology	Meteorology		

? DO YOU KNOW?

The science which deals with the study of different kinds of poisons is known as **Toxicology**.

Space Capsule

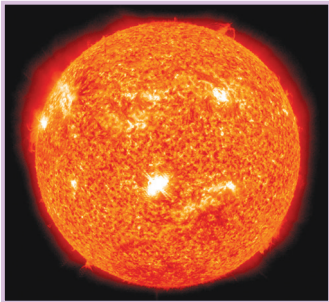



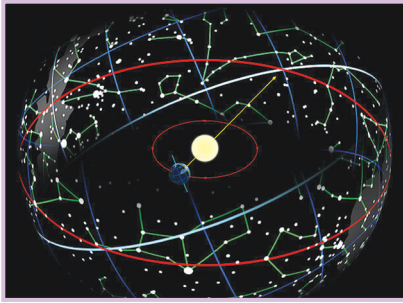
- A. Given below are descriptions of some of the terms related to space. Read them carefully and complete the crossword.

Crossword grid with clues and corresponding images:

Clues:

- ¹A _____
- ²C _____
- ³E _____
- ⁴C _____
- ⁵L _____ R
- ⁶P _____
- ⁷S _____

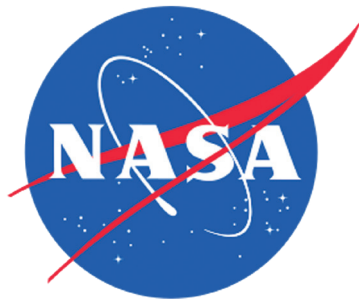
Images:

-  Sun
-  Asteroid
-  Comet
-  Constellation
-  Elliptic

- Minor planets whose orbits lie between Mars and Jupiter.
- Heavenly body within the gravitational field of the sun which is occasionally visible to the naked eye.
- The sun's apparent orbit.
- A group of fixed stars in the heavens.
- A measure of astronomical distance, equal to the distance light travels in the course of a year.
- It is the visible part of the sun.
- Dark patches appear on the surface of the sun.

B. Take the words from the Help Box and complete the following abbreviations.

1. NASA _____
2. ISRO _____
3. SLV _____
4. ALI _____
5. EDR _____



Help Box

National	Imager	Indian	Research
Aeronautics	Environment	And	Launching
Administration	Space	Organisation	Record
Data	Advanced	Land	Space
Organisation	Satellite	Vehicle	



DO YOU KNOW?

Late President Dr. APJ Kalam was so involved with launching of missiles in India that he was fondly called 'India's Missile Man'.



A Doctor's Dictionary

A description of some common medical terms is given below. Read the description and complete the name.

1.	A																		
2.	A																		
3.	N																		
4.	H																		
5.	B																		
6.	A																		
7.	A																		
8.	A																		
9.	A																		
10.	A																		



1. A drug or gas that causes unconsciousness or deadening sensation.
2. A medicine that lessens or stops pain.
3. Pain in the nerve.
4. An internal bleeding due to bursting of a blood vessel.
5. The pressure exerted by blood on the walls of arteries.
6. Unusual sensitiveness to things, such as dust, pollen, certain foods and drugs.
7. Medicines for destroying organisms, especially bacteria.
8. Germ-destroyer.
9. A drug which counteracts acidity in the stomach.
10. A post-mortem examination of a body.

Human Body

A. Human body consists of various organs which perform variety of functions. Read the given clues and unscramble the words to find out the names of the different body parts.

1. It is the sensory nerve of sight.

C P T I O

2. It provides the special sense of hearing.

R Y O T I D A U

3. This nerve is responsible for sense of smell.

Y R O T C A F L O

4. These are responsible for arousing different types of taste.

S T A T E D U B S

5. It acts as the floor for the base of the lungs.

M G A R H A P I D

6. It is the harder substance which covers the tooth.

L M E E A N

7. The organ which is located on the left side of abdomen and manufactures antibodies.

N E E P L S

8. It is the longest bone in the skeletal system.

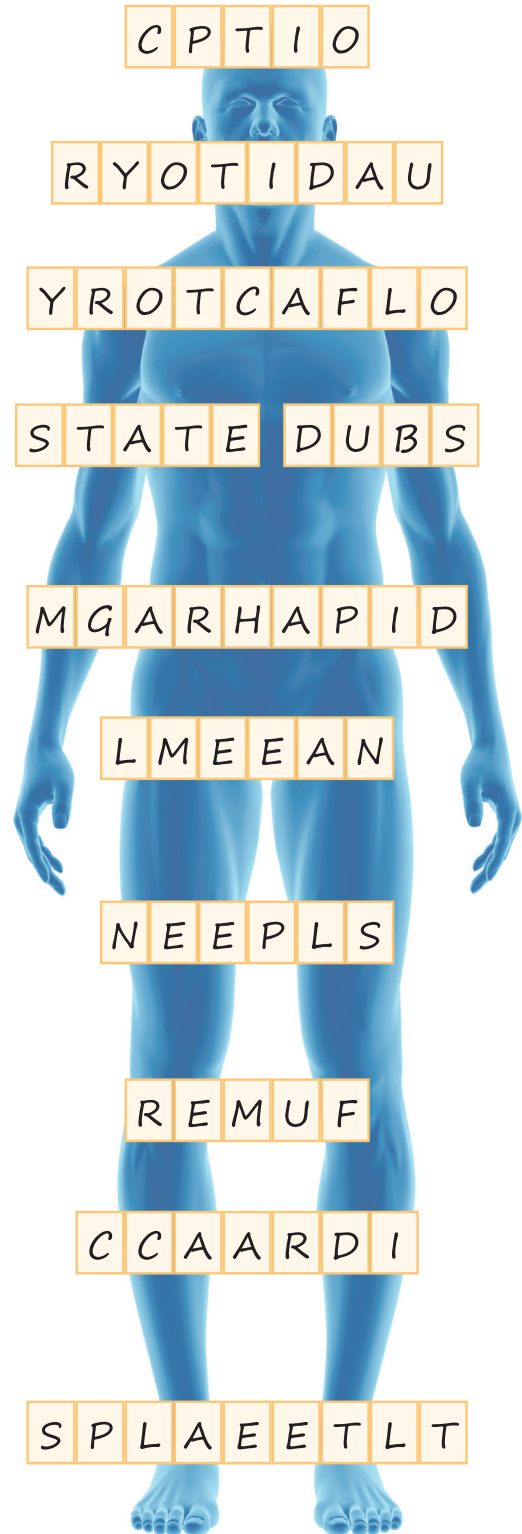
R E M U F

9. These muscles have the special property of automatic rhythmical contraction.

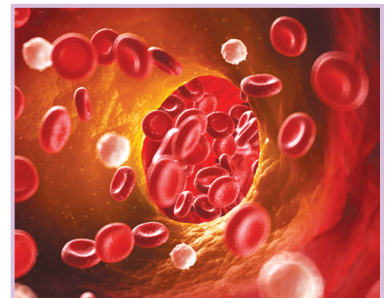
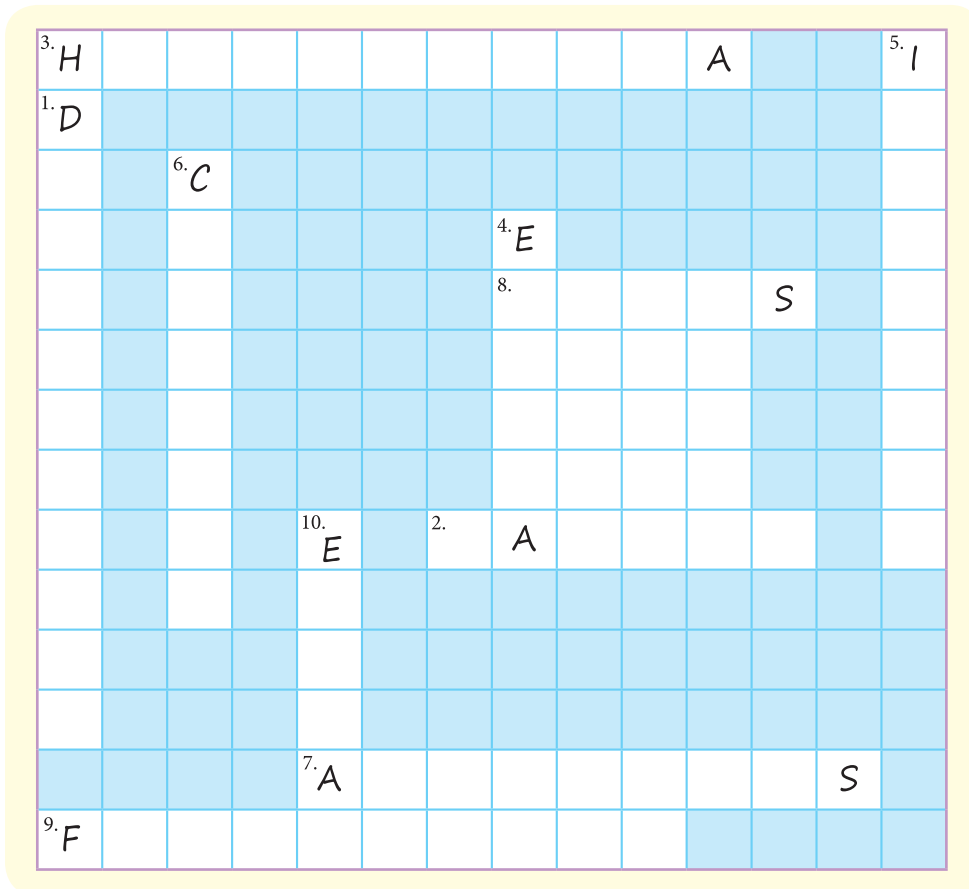
C C A A R D I

10. These small cells are found in blood and help in its clotting.

S P L A E E T L T



B. Many a times human body gets attacked by infections or diseases. Read the description given below and complete the names of the common infections and diseases in the maze.



1. This condition occurs due to the loss of water from the body.
2. It is the condition marked by abnormal growth of cells.
3. It is the disorder of the blood with deficiency in the clotting mechanism.
4. It is the inflammation of the skin due to an allergy to some food, drug or chemical used.
5. It is a respiratory illness that is caused by virus.
6. It is the condition where there is partial or complete opacity of the eye lense.
7. It is an inflammation of a joint or joints.
8. It is a highly infectious disease which results in bad throat, headache and watery nose.
9. It is the swelling of different parts of organs caused by round worms.
10. It is the condition in which swelling occurs due to fluid accumulation in body tissues.

▶ Chemistry of Life

The world of science has discovered a lot many things which are useful in our daily life. Given below are some such things. Choose the correct option for the given statements.

1. The balls which we keep in woollen clothes in summer only to protect them from moths and insects.

Naphthalene Sodium
 Cotton Nylon



2. The element present in our toothpaste to make our gums healthy.

Flourine Iodine
 Chlorine Calcium



3. A chemical used in vinegar. Vinegar is used in the preparation of noodles to enhance its taste.

Lactic Acid Tartaric Acid
 Acetic Acid Acetone



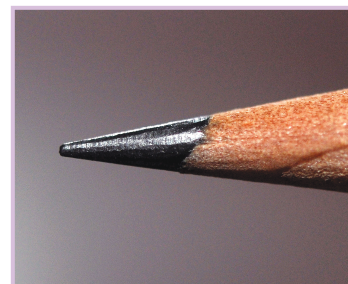
4. A chemical used in nail polish removers.

Acetic Acid Acetone
 Sodium Chlorine



5. The black shining substance which is used in pencil and is mistaken as lead.

Lead Oxide Graphite
 Phosphorous Coal



6. It is used in the preparation of shoe polish.

- Charcoal Graphite
 Carbon Black Coke



7. The sweetener used by the diabetic patients.

- Sucrose Fruit Sugar
 Glucose Saccharine



8. A chemical used to remove all the stains from our clothes.

- Phosphorus Magnesium
 Ammonia Acetic Acid



9. A non-metal used at the top of match sticks to help the fire to burn.

- Sodium Phosphorous
 Flourine Magnesium



10. A chemical added in the preparation of cakes to make them soft and spongy.

- Sodium Bicarbonate
 Calcium Carbonate
 Magnesium Chloride
 Sodium Carbonate



? DO YOU KNOW?

Naphthalene is made from crude oil or coal tar. It was first registered as a pesticide in the United States in 1948.

Mobile Mania

A. Read carefully the given statements and tick (✓) the correct choice.

1. These waves are used in Mobile Phone.

Radio waves

Microwaves

Ultrasonic waves

Supersonic waves

2. This messaging service is used to send a combination of text, sounds, images and video.

SMS

AMS

MMS

NMS

3. This is one of the wireless transmission standard that could replace cables between laptop and cellphone.

Bluetooth

PDA

Red eye device

Multimedia device

4. This band allows more data to travel faster over the air waves.

Band width

Frequency band

Transistor

Internet

5. The icon  often used in mobile represents–

Facebook

Viber

Mail

Music



B. Given below are the abbreviations which are related to mobile phones and its network. Read carefully and expand them in the space provided.



1. SIM _____



2. PIN _____



3. SMS _____



4. MMS _____



5. GPRS _____

? DO YOU KNOW?

The first mobile telephone call was made on April 3, 1973 by Martin Cooper, a former motorola inventor. He is also known as the 'Father of the Cellphone'.



Gaseous World

A mixture of gases surrounds our earth like an envelope. Human beings make use of gases in different ways. The uses and names of some gases are given below in two columns. Match them.

Uses	Gases
1. It is the chief constituent of Gobar gas.	Oxygen
2. It is used for filling weather balloons.	Carbon dioxide
3. It is the major component of air.	Carbon monoxide
4. It is used (in liquid form) as propellant in rockets.	Methane
5. It is used in aerated drinks, such as soda water, lemon, orange or cola.	Helium
6. It is used in special electric bulbs which gives a coloured glow.	Ozone
7. It is used for filling electric lamps.	Freon
8. It is a highly poisonous gas.	Nitrogen
9. It is responsible for the 'Green House Effect' of the earth's atmosphere.	Neon
10. It is used as cooling agent in refrigerators.	Argon



▶ Amazing Plants

Read carefully the description of some plants having special features. Name of these plants are given in the Help Box. Choose and write them against the correct description.

1. Its fragrant wood is used in furniture and as moth repellent. _____
2. It is an evergreen tree with needle-like leaves and woody cones. _____
3. Its leaves are used for preparing cigarettes, cigars and pipes. _____
4. It is a flowering plant, also named as four o'clock. _____
5. We obtain cork from the bark of this tree. _____
6. These can live at many different heights and temperatures. _____
7. It is a herb which acts as an aid to expel poison from the blood. _____
8. It is one of the cheapest natural fibres. _____
9. It is considered to be a possible aid to ease world food shortage. _____
10. It is the oldest known herb and considered sacred in India. _____

Help Box

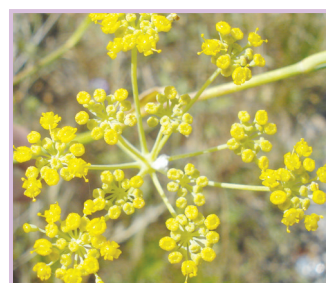
Tobacco	Mosses	Bougainvillea	Fennel	Pine
Basil	Cedar	Jute	Soyabeans	Oak



Oak



Cedar



Fennel



Soyabeans



DO YOU KNOW?

Research Institutes of India

1. Central Potato Research Institute – Shimla
2. Central Coconut Research Institute – Ernakulam (Kerala)
3. Central Rice Research Centre – Cuttack (Odisha)
4. Central Salt Research Institute – Bhavnagar (Gujarat)

▶ Amazing Animals

Life on earth began with a single cell. The same multiplied and changed into diversity. Read the special features given below and find out from the Help Box the animal possessing the same.

- It is the animal with two-chambered heart.
..... F _____
- The sole ape which is also India's tallest primate and the only monkey with no tail.
..... H _____
- A rare bird possibly named after a temperature measuring instrument found only on the Nicobar Island.
..... T _____ B _____
- World's largest snake which is also found in Sunderbans of West Bengal.
..... R _____ P _____
- Bird famous for water-proof feathers.
..... D _____
- A frog that becomes smaller when it grows older.
..... P _____ F _____
- It is the only whale which has tusks.
..... N _____
- This water mammal can hear the sound at 24 km (15 miles) depth under water.
..... D _____
- It is the only mammal which does not have wings but can fly.
..... B _____
- The adult fish has two eyes on one side of its head.
..... F _____



Hoolock



Flatfish

? DO YOU KNOW?

While sleeping, dolphin's half brain goes to sleep and other half is awake. It prevents it from drowning and helps continue breathing.



Help Box

Fish	Reticulated Python	Duck	Bat
Flatfish	Thermometer Bird	Hoolock	Dolphin
Paradoxical Frog		Narwhale	

Smooth Working

A. Mechanical gadgets and instruments have made our life easy and comfortable. Read the statements and tick (✓) the correct name from the options given below.

1. It is used to see the objects that are quite far off.

- | | |
|-------------------------------------|---------------------------------------|
| <input type="checkbox"/> Periscope | <input type="checkbox"/> Binoculars |
| <input type="checkbox"/> Microscope | <input type="checkbox"/> Spectroscope |

2. It is used to magnify very minute particles.

- | | |
|-------------------------------------|-------------------------------------|
| <input type="checkbox"/> Microscope | <input type="checkbox"/> Periscope |
| <input type="checkbox"/> Telescope | <input type="checkbox"/> Binoculars |

3. It is an automatic running stairway.

- | | |
|------------------------------------|-----------------------------------|
| <input type="checkbox"/> Escalator | <input type="checkbox"/> Elevator |
| <input type="checkbox"/> Projector | <input type="checkbox"/> Digger |

4. It is used for dragging soil and clearing garbage.

- | | |
|--------------------------------------|-----------------------------------|
| <input type="checkbox"/> Road roller | <input type="checkbox"/> Tractor |
| <input type="checkbox"/> Digger | <input type="checkbox"/> Computer |

5. It is used to make concrete structure of building by mixing together sand, cement and water.

- | | |
|-------------------------------------|---|
| <input type="checkbox"/> Projectile | <input type="checkbox"/> Concrete mixer |
| <input type="checkbox"/> Digger | <input type="checkbox"/> Escalator |



B. Here is the list of some useful inventions in Column A. Match them with the inventors in Column B.

A

1. Microscope ▶
2. Typewriter ▶
3. Safety Razor ▶
4. Diesel Engine ▶
5. Fountain Pen ▶

B

- (a) Rudolf Diesel ◀
- (b) Waterman ◀
- (c) Sholes ◀
- (d) Gillette ◀
- (e) Z. Janseen ◀

Fact File

Tiger Tales

Tigers are called *Panthera Tigris* in Latin, *Bagh* in Hindi and Bengali.

An average male tiger weighs about 180-200 kg and female about 140 kg.

The roar of a Royal Bengal Tiger can be heard up to 2 km.

Tigers like water. They are good swimmers and often cool themselves in ponds and streams.

Tigers hunt at night and like to hunt alone.



Tigers depend upon their canines teeth for survival, and if they lose their canines they can no longer kill and starve to death.

Tigers have stripes on their skin too. Even if they are shaved off completely, the distinctive pattern on their skin will still be visible.

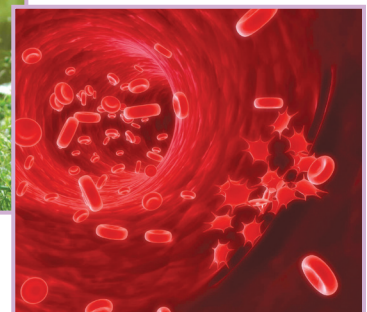
▶ Test Your Wisdom

1. Fill in the blanks.

- _____ is the branch of science that deals with the study of insects.
- The dark patches that appear on the surface of the sun are called _____.
- _____ acts as the floor for the base of the lungs.
- _____ is present in our toothpaste to make our gums healthy.
- _____ gas is used for filling up electric lamps.

2. State the following statements as True or False.

- Cardiac muscles are found only in the heart of human body.
- Carbon monoxide is a highly poisonous gas.
- Lead is used in the preparation of shoe polish.
- Hoolock is an ape without a tail.
- Platelets are the small cells that are present in the blood.



3. Tick (✓) the correct answer.

a. A drug that lessens or stops pain.

Anaesthetic

Analgesic

Neuralgia

b. A chemical used to remove all the stains from clothes.

Flourine

Naphthalene

Ammonia

c. It is a herb that removes poison from the blood.

Oak

Mosses

Fennel

d. A machine that is used for dragging soil and clearing garbage.

Escalator

Digger

Binoculars

e. The minor planets that lie between Mars and Jupiter.

Meteors

Asteroids

Photosphere

4. Match the following columns.

A

a. Vinegar

b. Femur

c. Bat

d. Sensory nerve

e. Sacred herb

B

(i) the largest bone

(ii) optic

(iii) basil

(iv) acetic acid

(v) mammal

5. Read the given conditions and write in the box the name of the sense organ to which they belong to.

- a. Glossitis
- b. Deafness
- c. Cataract
- d. Dermatitis
- e. Anosmia



6. Arrange the following in their respective categories.

Aurora	Propane	Ecology	Zodiac	Nebula	Asoka
Psychology	Arjuna	Acetylene	Butane	Oceanography	Bael

Gases	Plants	Space	Branch of Science

